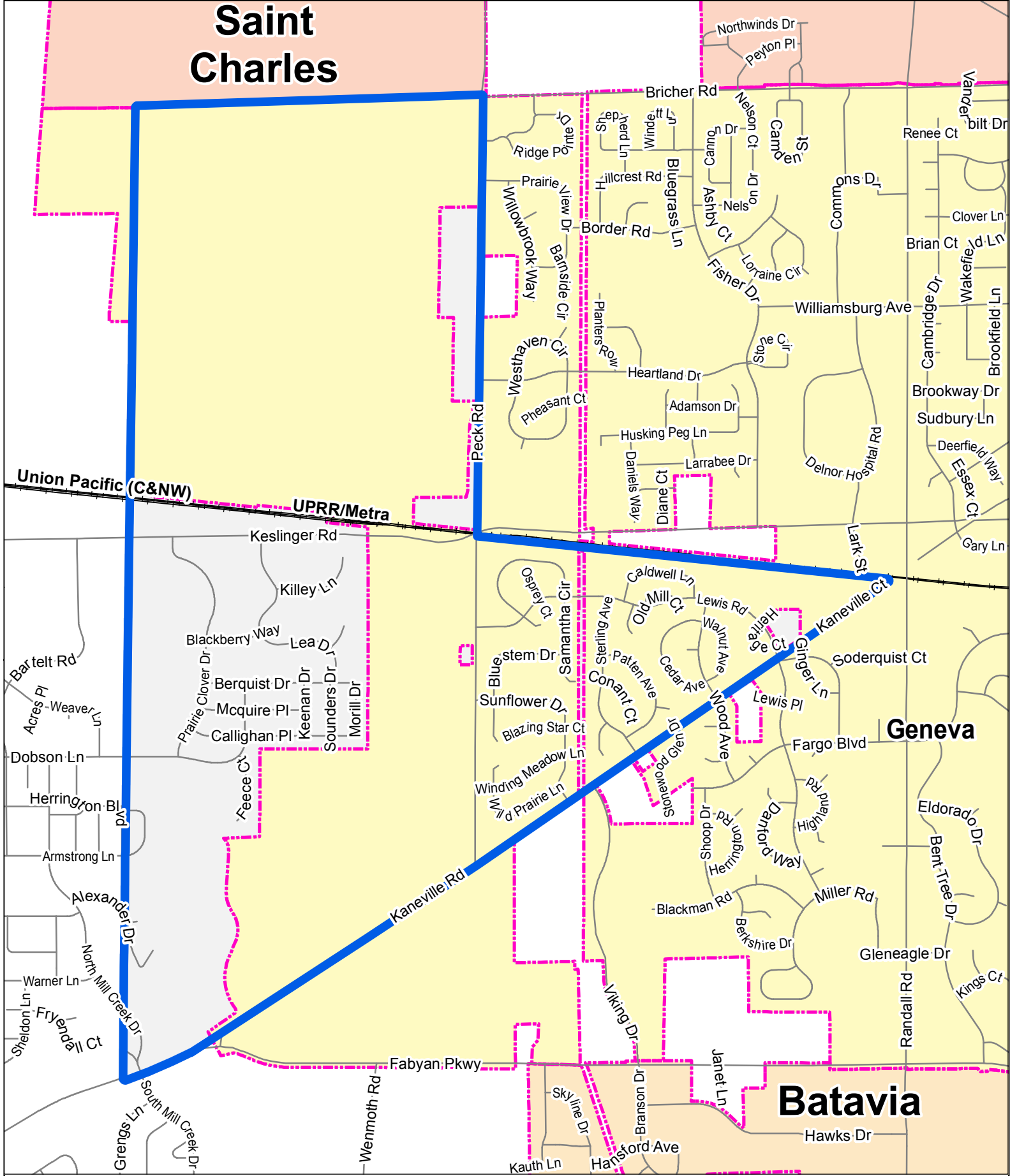


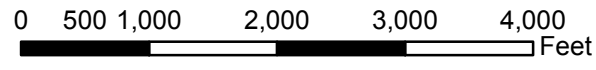
Saint Charles



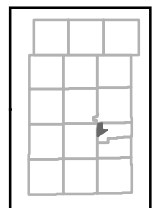
Kane County GIS-Technologies
 GIS-Technologies
 715 Geneva Ave
 Geneva, IL 60134
 Voice: (630) 208-8655
 Fax: (630) 208-8659
 gistech@co.kane.il.us

Map Projection: Transverse Mercator
 State Plane - Illinois East, NAD 1983
 07/02/2018 rjk

- Railroads
- Precincts
- Municipalities
- Fox River



Precinct - GE20
 Kane County, Illinois
 County Clerk



The precinct information represented here is based upon information collected by the County Clerk. The County Clerk's Elections office has not verified the content or accuracy of this map and is the final authority on determining a parcel's precinct.

This map does not represent a survey. No accuracy is assumed for the data delineated herein, either expressed or implied by Kane County or its employees. This map is compiled from official records, including plats, surveys, recorded deeds, and contracts, and only contains information required for local government purposes. See the recorded documents for more detailed legal information.